

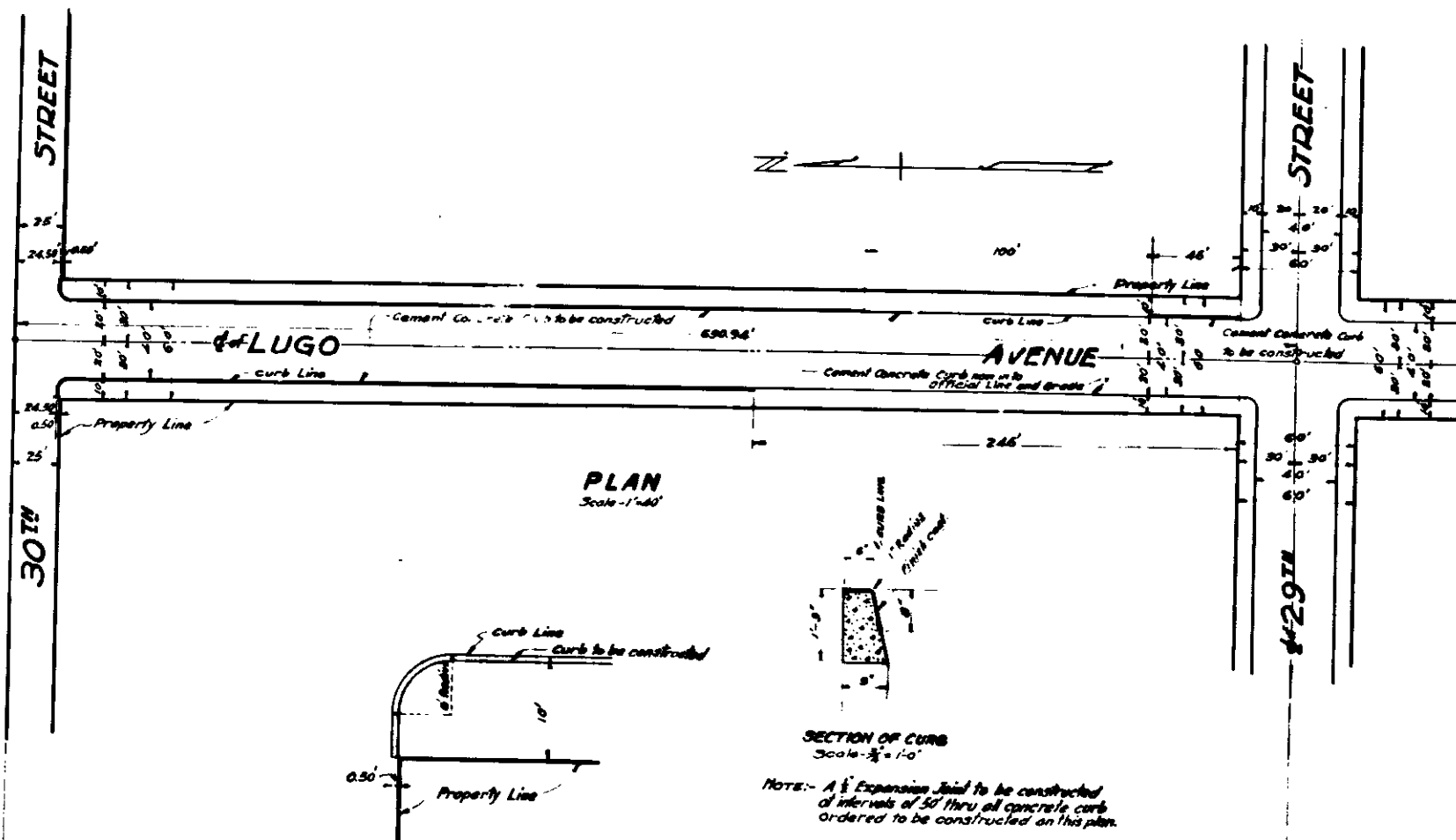
**PLAN N^o 1873
FOR THE IMPROVEMENT OF
LUGO AVENUE**

BETWEEN
29TH STREET AND 30TH STREET
IN THE
CITY OF SAN BERNARDINO, CALIFORNIA
NOV. 1949.

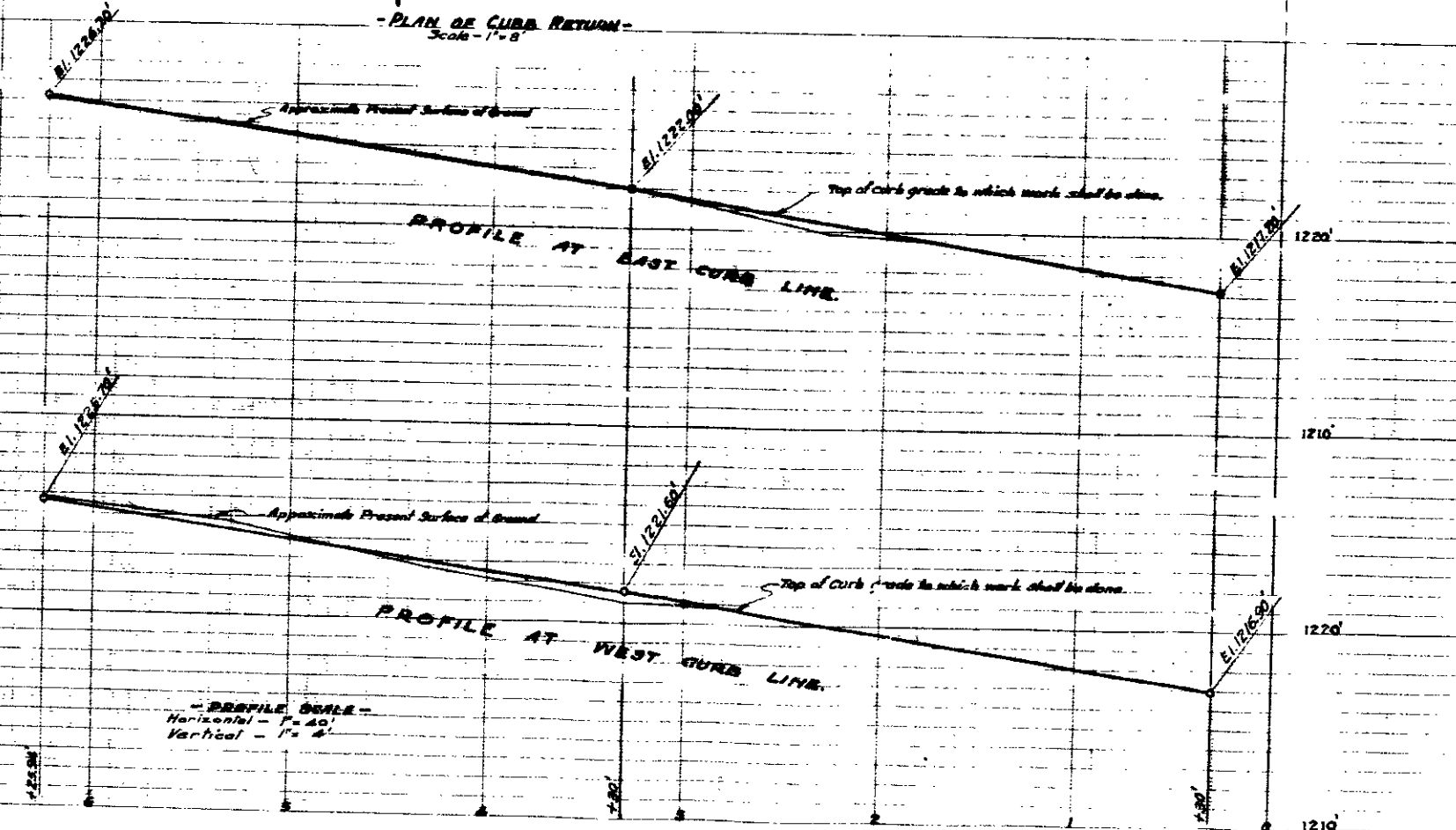
R. D. FORBYSYNE,
ACTING CITY ENGINEER.

PLAN ADOPTED..... November 25, 1949..

FILED
RECORDED
ACTING CITY ENGINEER



LEGEND
" or ' means inches or inches.
' or ft. means feet or feet.
172 means number.
E1 means elevation.
Cement Concrete Curbs to be constructed shown thus in plan.
shown thus in section.



TITLE TO STREET
LUGO AVENUE dedicated as Lugo Street by Ordinance No. 1188 of the City of San Bernardino, California, recorded in Book 27 of Maps of pages 6 and 7 records of the County Recorder, San Bernardino County, California. Name changed to Lugo Avenue by Resolution No. 163 of the City of San Bernardino, adopted Nov. 3, 1930.

GRADE RESOLUTION
Grade of LUGO AVENUE was established by Resolution No. 1389 of the City of San Bernardino, California, adopted July 6, 1948.

- DATUM -
All elevations shown in this plan are in feet and are above a plane which is 1043.28 feet below the City Bench Mark as established by Ordinance No. 383 of the City of San Bernardino, California.

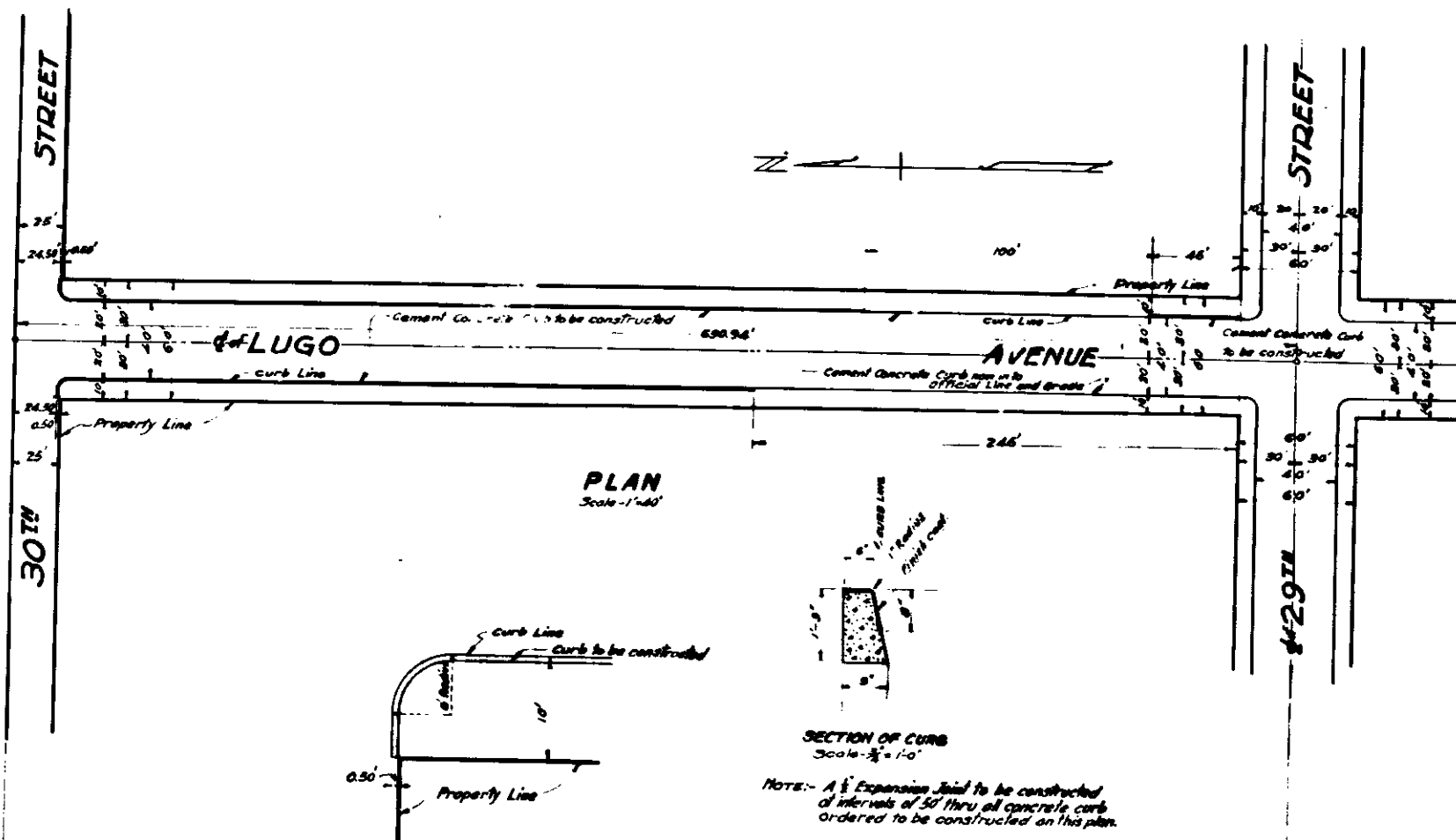
- PROFILE LEGEND -
Approximate Present Surface of Ground shown by Black line thus;
Grade to which work shall be done shown by Red line thus;

**PLAN N^o 1873
FOR THE IMPROVEMENT OF
LUGO AVENUE**

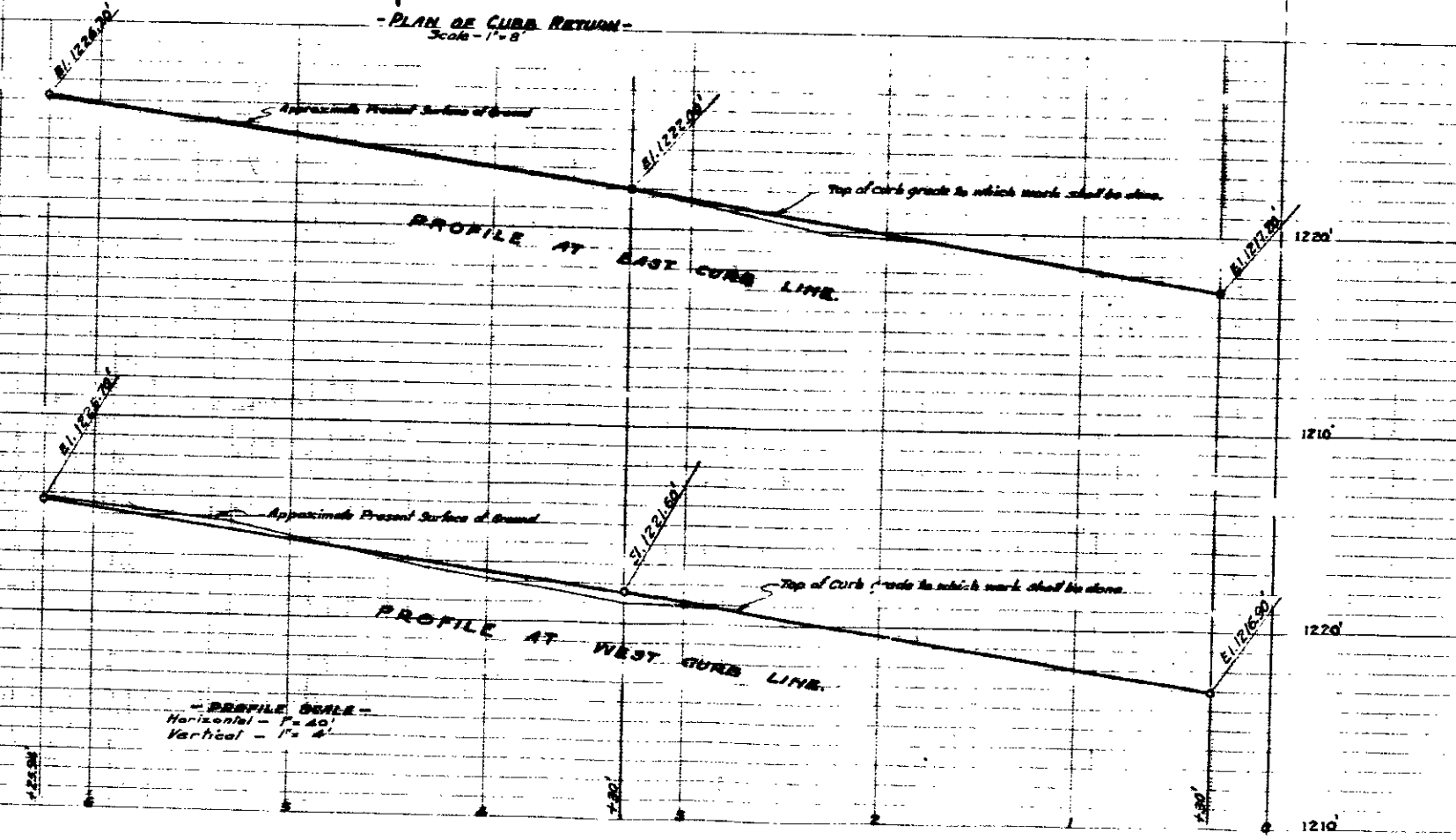
BETWEEN
29TH STREET AND 30TH STREET
IN THE
CITY OF SAN BERNARDINO, CALIFORNIA
NOV. 1949.
R. D. FORBYSYNE,
ACTING CITY ENGINEER.

PLAN ADOPTED..... November 25, 1949..

FILED
RECORDED
ACTING CITY ENGINEER



LEGEND
" or ' means inches or inches.
' or ' means feet or feet.
172 means number.
E1 means elevation.
Cement Concrete Curbs to be constructed shown thus in plan.
shown thus in section.



TITLE TO STREET
LUGO AVENUE dedicated as Lugo Street by Ordinance N^o 1871 as recorded in Book 27 of Maps of SQUARE TRACT N^o 1871 as recorded in Book 27 of Maps of pages 6 and 7 records of the County Recorder, San Bernardino County, California. Name changed to Lugo Avenue by Resolution N^o 163 of the City of San Bernardino, adopted Nov. 3, 1930.

GRADE RESOLUTION
Grade of LUGO AVENUE was established by Resolution N^o 1389 of the City of San Bernardino, California, adopted July 6, 1948.

- DATUM -
All elevations shown in this plan are in feet and are above a plane which is 1043.28 feet below the City Bench Mark as established by Ordinance N^o 383 of the City of San Bernardino, California.

- PROFILE LEGEND -
Approximate Present Surface of Ground shown by Black line thus;
Grade to which work shall be done shown by Red line thus;

- PROFILE SCALE -
Horizontal - 1" = 40'
Vertical - 1" = 2'